

SWL 3230

Skid Steer Loader



- Engine power 55.4kW
- Machine weight 3450kg
- Rated operating capacity 1100kg



MANDAMAT

2020 Route d'Heyrieux

69360 SAINT-SYMPHORIEN-D'OZON

TEL : 04.72.76.23.93 / contact@mandamat.com

Please read the manual book and maintenance book before operation. Changes are periodically added to the information, and Sunward may change the products or services described in this book at any time without announcement. All rights of this manual book reserve to Sunward.

SWLEN 2019



◆ Strong Power



The customized Kutoba engine imported with original packaging can reach the strictest emission standards (EU Stage5 and EPA T4F), and it features strong power, high reliability, low noise, energy saving and environmental protection.

◆ Curve Hoisting Trajectory



Optimized structure designation enable machine to have higher lifting height than other brand.



Operation with pilot handles

◆ Pilot Handles

Traveling and actions are all controlled by pilot handles, featuring light and handy and agile operations.



◆ Double-accelerator Control

The SWL3230 skid load is of the double-accelerator control mode. The manual accelerator control is used for working places requiring a constant power, while the foot pedal accelerator is used for excavation and loading.

◆ Closed Hydrostatic Traveling System

Static hydraulic traveling system, equipped by advanced anti-overloading hydraulic device, large-torque motor, big driving force, with self-brake function, safe and reliable.

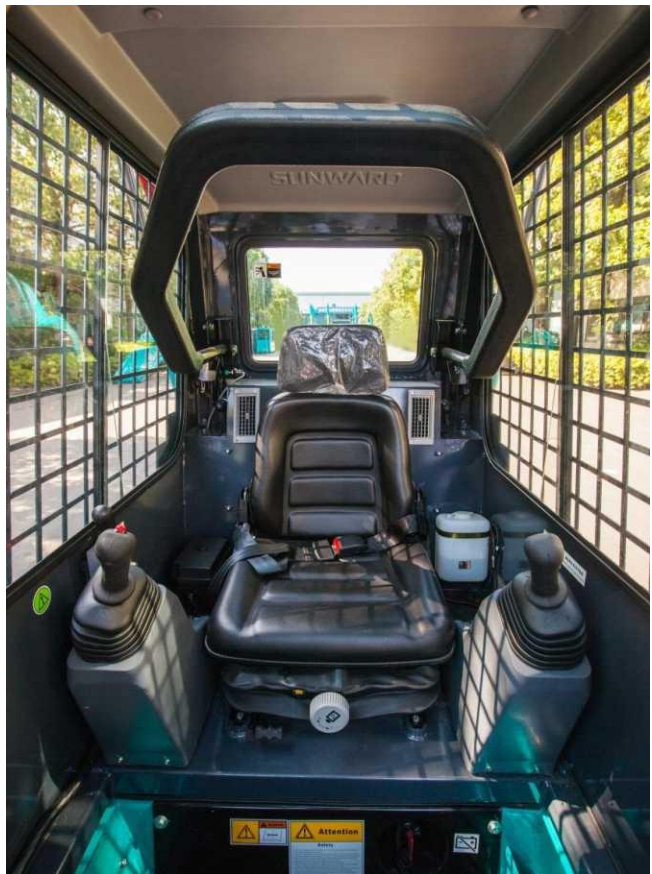


◆ Standard Quick Coupler

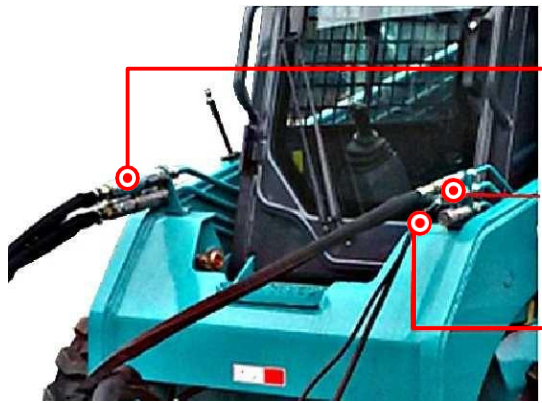
Adapt to international common quick coupler, fast change various kinds attachment. Majority of attachments can be used in Sunward skid steer loader.



- Wide space and good vision, easy in and out, all of button and switch is reachable.
- Conform to FOPS/ROPS standard cab structure.
- Three-level electric starting protection system.
- Complete warning beacon, warning signal and reverse horn.
- Rear window detachable.



Equipped with heater and air conditioning, choose appropriate configuration depending on different regions.



Large-discharge output

Standard-discharge output
Electronic control output

A large-discharge system can be selected. With the confluence of two pumps, the product increases the output discharge to meet the demands of more large-discharge accessories such as milling machine.



◆ Standard Hydraulic Horizontal Hoisting

Standard hydraulic horizontally, lift the movable boom ensure invariant bucket angle with the ground, to prevent falling material, reduce the labor intensity of the operating personnel.

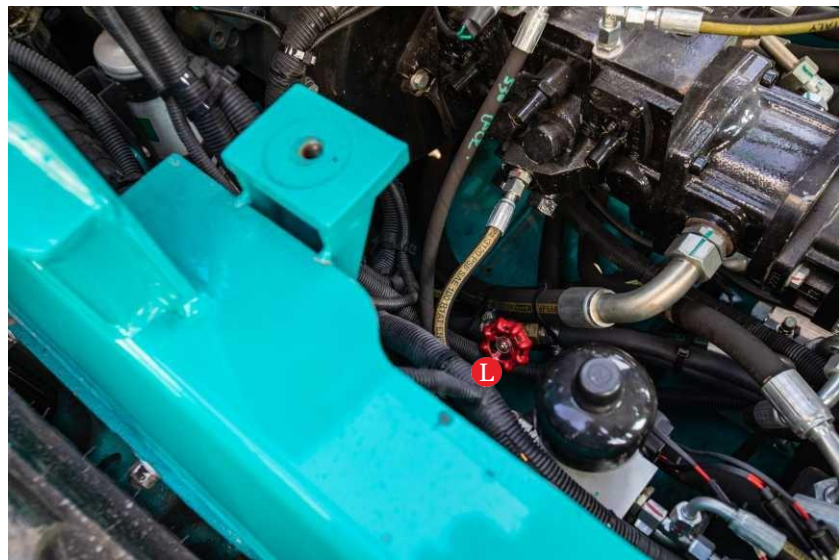
◆ Emergency Descent Function of Working Unit

The boom can safely conduct the emergency descent in case of the stalling of engine.

Maintenance & Repair



- A Air filter
- B Oil return filter
- C Hydraulic oil tank cap
- D Fuel filter
- E Oil-water separator
- F Fuel tank cap
- G Engine oil filter
- H Auxiliary tank
- L Heater valve switch



Equipment

The standard and optional equipment varies from country to country.
For more information, please contact with us.

Cab		Working Unit	
FOPS/ROPS Cab, open, lift up	<input type="radio"/>	Standard quick coupler	<input checked="" type="radio"/>
FOPS/ROPS Cab, lift up	<input checked="" type="radio"/>	Standard bucket	<input checked="" type="radio"/>
Safety armrest	<input checked="" type="radio"/>	Additional counterweight	<input type="radio"/>
Adjustable seat	<input checked="" type="radio"/>	Standard tires	<input checked="" type="radio"/>
Centralized panels	<input checked="" type="radio"/>	Solid tires	<input type="radio"/>
Double-accelerator Control	<input checked="" type="radio"/>	Various accessories	<input type="radio"/>
Pilot control handles	<input checked="" type="radio"/>	Electrical System	
Fan heater	<input checked="" type="radio"/>	Front LED work light	<input checked="" type="radio"/>
Air conditioner	<input type="radio"/>	Hazard	<input checked="" type="radio"/>
Hydraulic System		Back-up alarm	<input checked="" type="radio"/>
Emergency descent	<input checked="" type="radio"/>	Horn	<input checked="" type="radio"/>
Leveling function	<input checked="" type="radio"/>	External power supply	<input type="radio"/>
Standard flow system	<input checked="" type="radio"/>	Electronic accessories control system	<input type="radio"/>
High flow system	<input type="radio"/>	Rear work LED light	<input type="radio"/>

- ☒ Standard equipment
- ☐ Optional equipment

Multi-function



Snow Blower



Cold Planer



Ditcher



Compact



Mixer



Auger



Breaker



4 in 1 bucket



Delver



Snow Blade

Product Parameter

Operation Parameter		
A	Maximum overall height	mm4020
B	Height to hinge pin	mm3123
C	Height to top of cab	mm2068
D	Height to bottom of level bucket	mm2948
E	Length without standard bucket	mm2958
F	Length with sandard bucket	mm3727
G	Maximum dump angle	°43
	Dump height	2395
		625
		30
		93
		1148
		205
		26
		1344
		2201
		1747
		1170
		1475
		1830
Performance		
		3450
		1100
		2200
		2480
		2430
		12.6
Engine		
		KUBOTA
		V3307-CR-TE5B
		4-cylinder, water cooling, diesel engine
		EPA Tier4 / EU Stage 5
		55.4/2600
		265/1600
Electrical System		
		12/3.0
		12/80
		120
Service Refill Capalities		
		60
		110
Hydraulic System		
		86
		131
		210
		165

Worldwide Network for Sales and Service

